

6

## Nei Gebléishal, comparaison avec des autres sites similaires réalisés à travers l'Europe

**Maria Spada,**

architecte, responsable patrimoine industriel auprès du CNCI

HALLZ  
WE NEED  
#10



( Photo © Maria Spada )

# OGR Torino

OGR - Officine Grandi Riparazioni

## Location

Torino (I)

## Surfaces

35.000 m<sup>2</sup> (intérieur) 5.000 m<sup>2</sup> (extérieur)

## Client

Fondazione CRT

## Concept/Réalisation

2013/2019

## Architecture

Boffa, Petrone & Partners Progettisti Associati

## Team

Building Engineering

## Cost

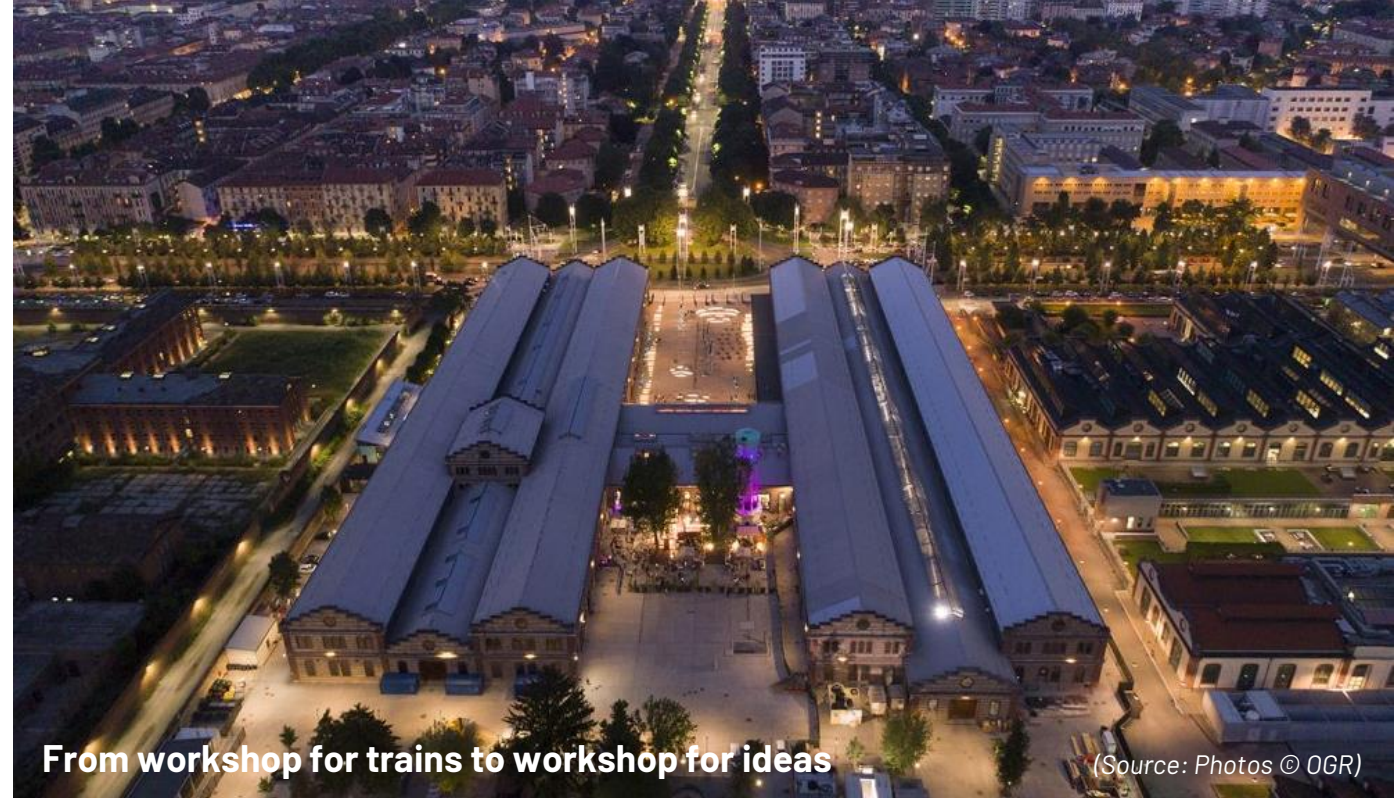
100 M

**From former train repairs Workshops to new Workshops for contemporary culture, innovation and business acceleration, with a marked international stance.**

The idea developed by the studio consists in the transformation of the entrance courtyard into an open space to the city, a large square that will become the court of the OGR-CRT pole, a foyer in plain air, a meeting place, interaction, communication independent of the use of the spaces within it, a new square for the City of Turin

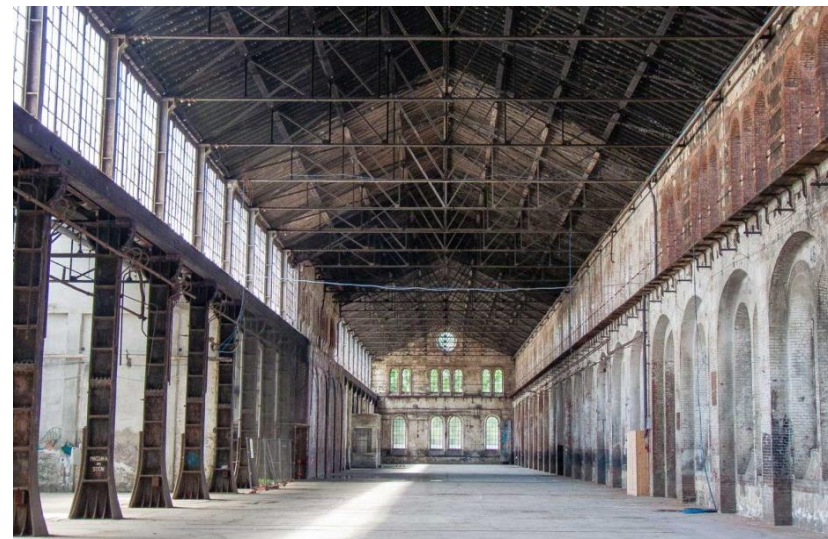
[OGR Torino - Project \(molecule.com\)](#)

[OGR: IL PROGETTO ARCHITETTONICO - Gruppo Building](#)

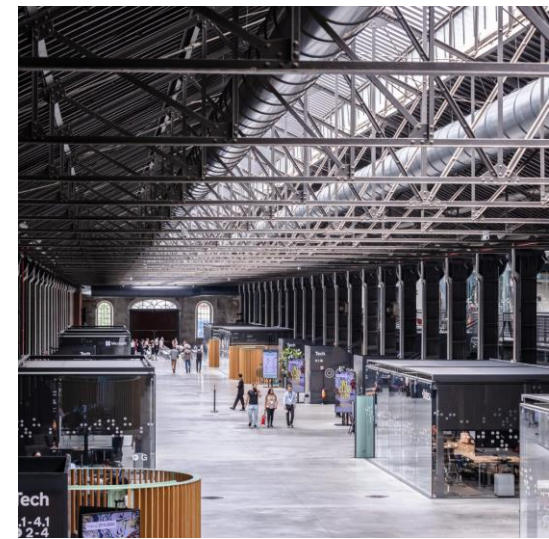


**From workshop for trains to workshop for ideas**

(Source: Photos © OGR)



Before

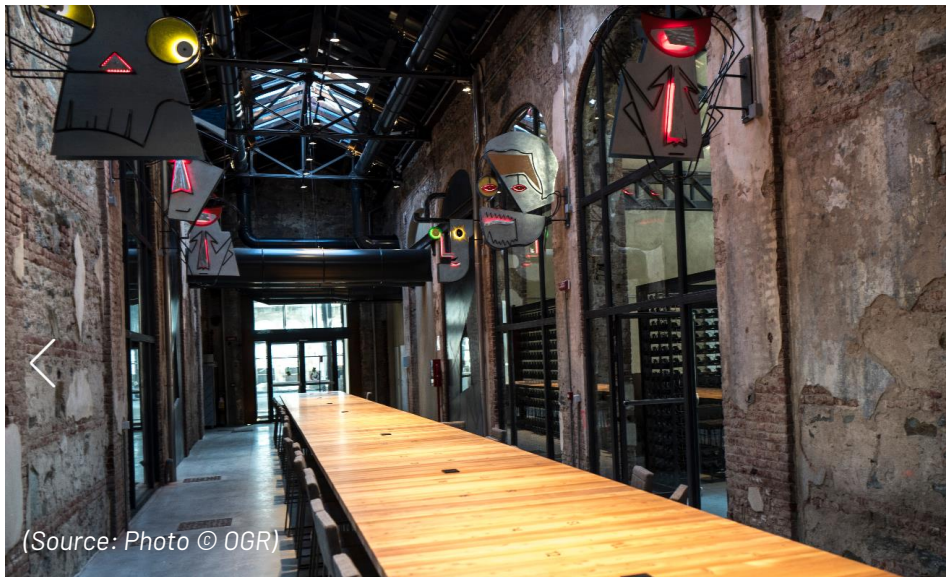


After



# OGR Torino

OGR - Officine Grandi Riparazioni



## The building's history

### 1995 Demolition averted

Turin's new urban development planning envisions the demolition of the historic H shaped building but, thanks to an amendment, the OGR are saved.

### 2008 Turin rediscovers the OGR

Turin residents come to discover the OGR thanks to guided tours and to the "Torino011 Biografia di una città" exhibition, set in the OGR.

### 2013 Restoration and redevelopment

Società OGR-CRT, specifically set up by Fondazione CRT, purchases the OGR and begins the great restoration project to redevelop the ancient workshops where trains used to be repaired.



**260,000**

total cubic meters



**35.000**  
**sq.m.**  
total surface



**100 mln €**  
investment for the  
requalification



**2,700 sq.m.**  
exhibiting space



**2,750**  
show seatings



**99**  
conference seatings



**4'**  
on foot from Porta  
Susa



**50'**  
from Milan by high-  
speed train

[OGR Torino - Progetto](#)

# J1 – La Passerelle

ADIM Provence

## Location

Marseille (F)

## Surface

29.106 m<sup>2</sup> (incl. exterior surfaces)

## Client

ADMIN Provence

## Project Management

Constructor : VINCI Construction France / Travaux du Midi

BET : EGIS

Investor : Caisse des Dépôts

## Concept

2019/2023 2024

## Architecture

Reichen et Robert Associés

## Team

-

## Cost

100 M

**Rehabilitation of Hangar J1 on the port of Marseille in the metropolitan centre.**

**Tertiary, cultural, hotel, leisure, service and commercial space.**

The project was guided by the desire to re-establish the link between the city and the Port and to give the people of Marseille access to the sea again. It plans to develop a wide esplanade covering more than 12,000 m<sup>2</sup> that is entirely open to everyone and sheltered by a vast canopy. The architectural choice was to preserve the spirit of the place: a large hall, a collector's item, a witness to the history of the city and a living collective memory

[J1 - La Passerelle – Carta - Reichen et Robert Associés \(reichen-robert.fr\)](https://reichen-robert.fr)



Before



After

(Source: Photos © Carta-Reichen et Robert Associés)



# Halle gourmande

Saint Quen Sur Seine

**Location**

Saint Quen Sur Seine (F)

**Surface**

12.000 m<sup>2</sup> (Hall)

**Client**

NEXITY

**Constructor**

Binx Smartility/Innovia

**Concept/Realization**

2017/2024

**Architecture**

Carta – Reichen et Robert Associes

**Team**

Saguez & Partners / Squano/Sfica/Socotec/CDS Associés

**Cost**

7 760 000 M (8.000 m<sup>2</sup> rehabilitation hall)

**Construction of the hull and interior of the Halle Gourmande in the Alstom Halle building.**

It hosts restaurants, food counters, a food market, a co-working space, a multipurpose room and a cooking school.

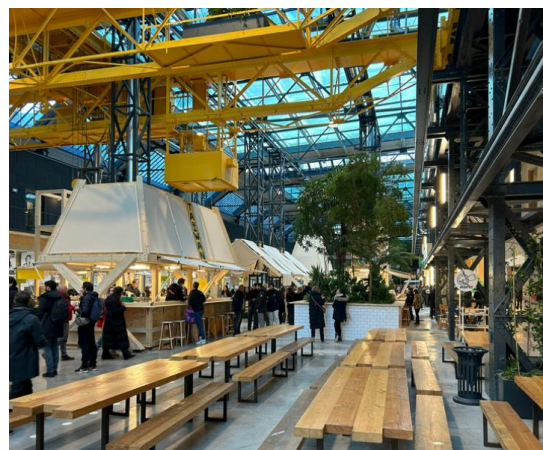
Conservation of the existing metal structure.

Addition of a modular prefabricated timber structure for new volumes

[Les Docks de St-Ouen | Commerces et Halle gourmande | La Halle des Docks \(saintouen-lesdocks.com\)](#)  
[Halle gourmande – Carta - Reichen et Robert Associés \(reichen-robert.fr\)](#)



Before



(Source: Photos/Images © Carta-Reichen et Robert Associés)



# LokHal

## TILBURG

**Location**

Tilburg (NL)

**Surface**

11.000 m<sup>2</sup>

**Client**

Municipality of Tilburg

**Constructor**

Binx Smartility

**Concept**

2015/2018

**Architecture**

Civic Architects

**Team**

Braaksma & Roos/Inside Outside / Petra Blaisse/Donkergroen/Mecanoo Architecten  
/ Arup Engineering

**Cost**

31. 458 000 M

**The LocHal is the new public library for the City of Tilburg. A former locomotive hangar has been transformed into a public meeting place that turns 'the wrong side of the tracks' into a vibrant mixed-use district.**

The mixed-use building offers a variety of spaces: reading and working areas, performance and presentation spaces as well as a variety of labs and workshops.

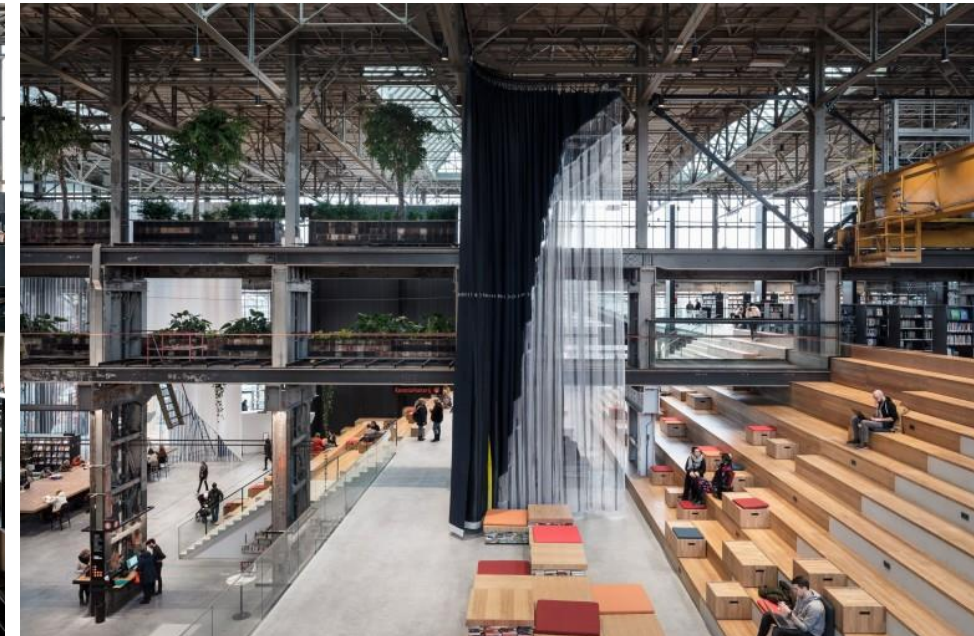
[LocHal Public Library - Civic Architects](#)



After



Before

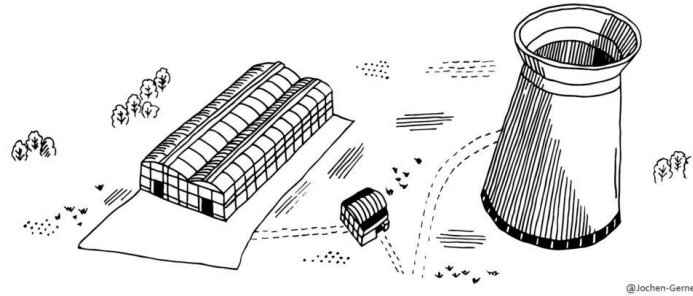


(Source: Photos© Civic architects)



# LE WIP

## GRANDE HALLE



### Location

Caen (F)

### Surface

8 560 m<sup>2</sup>

### Client

SEM Normandie Aménagement

### Concept/Realization

2014-2019

Fermeture 2023

### Architecture

Encore Heureux

### Team

Ligne BE/T&E Ingénierie / Liliane Motta / ECRH/Albert & Compagnie/ATEVE

### Cost

7.6 M

**The final remains of the gigantic Société Métallurgique de Normandie (Normandy Metal Production Society) had their blast furnace built in 1917 on the plateau of Colombelle in the North-West agglomeration of Caen. Conversion of a former industrial electrical workshop into a Third Place, event space and catering.**

An innovative approach to construction sites, the reuse of material. New design methods to be experimented with original project engineering and rethinking traditional construction schemes.

[Umnutzung in der Normandie von Encore Heureux / Hallenrecycling - Architektur und Architekten - News / Meldungen / Nachrichten - BauNetz.de](#)

[La Grande Halle | Colombelles - Normandie Aménagement \(normandie-amenagement.com\)](#)



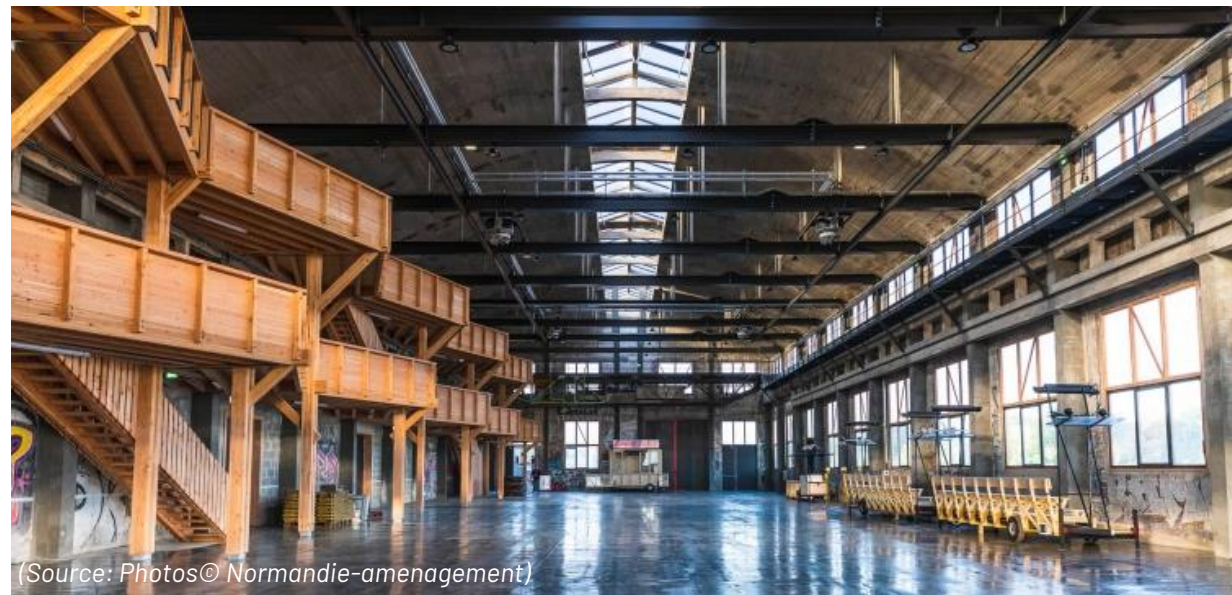
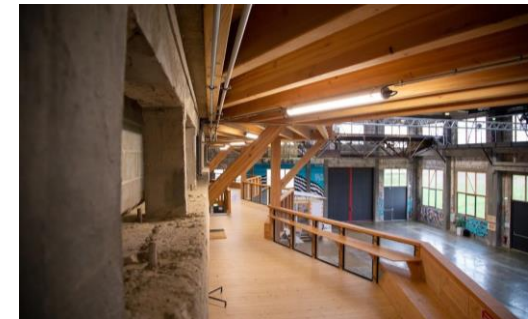
Before



After



(Source: Photos© Baunetz)



(Source: Photos© Normandie-amenagement)



# GRANDE HALL

## PARC DES ATELIERS

### Location

Arles (F)

### Surface

7.000 m<sup>2</sup>

### Client

Région PACA

### Concept/Realization

2008

### Architecture

Agence Moatti – Rivière, architecte mandataire

### Team

Philippe Donjerkovic/Alma Provence /IG TECH/RFR/Ecibat/Ayda/Fabrice

Bougon/ACL/Norisko

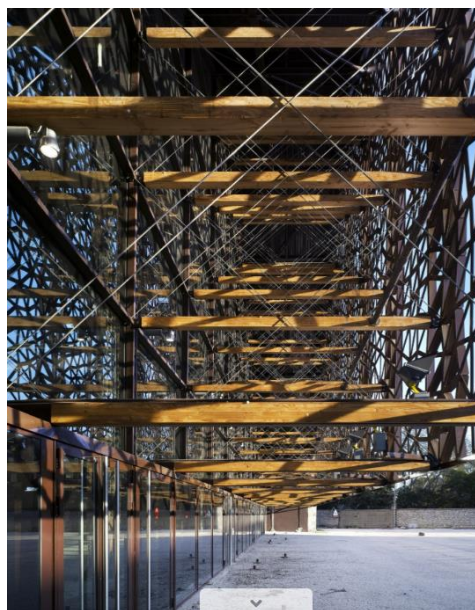
### Cost

7 M

### Rehabilitation and reconversion of a former boilerworks of the SNCF Workshops into a multi-purpose performance hall.

A sort of double face, the facades and roofs of this industrial wasteland play on the contrast between heritage and modernity. It is an architecture which is based on utilitarian principles which favor technical and economic requirements over aesthetic research.

[Grande Halle, Arles – Moatti & Rivière \(moatti-riviere.com\)](http://moatti-riviere.com)



(Source: Photos© Moatti & Rivière)



# LA FRICHE BELLE DE MAI

## LOT 3 THE PANORAMA - MARSEILLE 13

### Location

Marseille (F)

### Surface

34.000 m<sup>2</sup>

### Client

SCIC S.A. Friche la Belle de Mai

### Concept/Realization

2010-2013

### Architecture

ARM Architecture Matthieu Poitevin & Pascal Reynaud

### Team

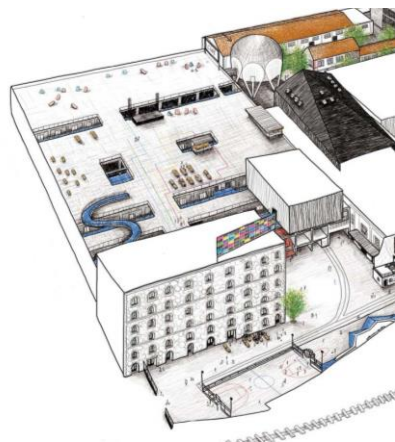
DVVD/ ELITHIS/ R2M

### Cost

13 250 000 M

**The initiative of La Friche has transformed the old tobacco factory into an artistic hub, where art and culture are at the centre of activities.**

La Friche, in its prototypal form, arose in 1992 out of the new models for urban cultural interaction in the public interest, now known as “third places.” This unique, reinvented space brings together artistic activity, modes of urban transformation, real connections to the region, and dynamic cooperation.



Before



After



(Source: Photos © caractère-sécial)

[Caractère Spécial | The Panorama | La Friche Belle de Mai | Caractère Spécial \(caractere-special.fr\)](http://caractere-special.fr)



# 507 – Fab House

## HUTCHINSON 507

### Location

Chalette-sur-Loing (F)

### Surface

4 200 m<sup>2</sup>

### Client

Hutchinson

### Concept/Realization

2015

### Architecture

Encore Heureux

### Team

Ligne BE/Innovation Fluides/ATEC/Orythie

### Cost

8 M (3 000 m<sup>2</sup>)

**Located East of Orleans in Chalette-sur-Loing – on the industrial site where the group was founded – the building 507 will host Hutchinson's future innovation center.**

The large building existed before being renovated by Gustave Eiffel after the fire that had burnt the old royal paper manufacture in 1869.

The inside layout is highlighted by the outstanding metal framework.

be a pilot in the field of renovation.



[agstudio.fr/reference/hutchinson-fab-house-507/](http://agstudio.fr/reference/hutchinson-fab-house-507/)

(Source: Photos© Agstudio)



# ALSTOM WAREHOUSES

## NANTES HIGHER SCHOOL OF FINE ARTS Hall 4+5

### Location

Nantes (F)

### Surface

9 827 m<sup>2</sup> (surface terrain 17 000 m<sup>2</sup>)

### Client

Nantes Métropole

### Aménageur

SAMOA

### Concept/Realization

2010/2017

### Architecture

Franklin Azzi Architecture

### Team

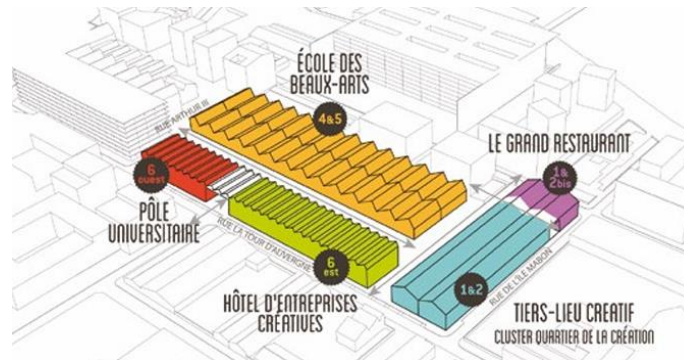
ACS/SETEC Bâtiment TRIBU/12ECO - BAS SMETS/ Lamoureux acoustique/T.e.s.s/Setec Bâtiment/Bas Smets/Casso et associés/Dekra

### Cost

27 M

**The installation of the École des Beaux-Arts de Nantes Saint Nazaire in the former Halles Alstom brings a region back to life. Respectful of the existing system, the project is based on the intrinsic qualities of the site.**

The halls opened, reorganized and re-connected, reveal the identity of the programs, participate in urban cohesion and are placed on a human scale. Committed to rejecting all attempts of architectural gesticulation, this solution not only favours an economy of means but also focuses on freeing spaces that will become expression areas with great flexibility for the students and the neighbourhood's life.



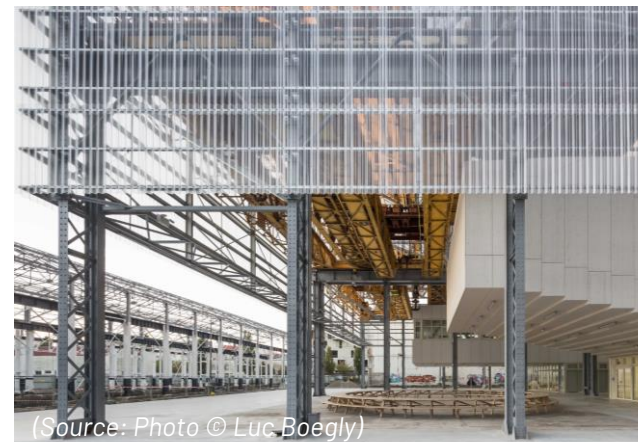
(Source: Photo © Franklin Azzi)



(Source: Photo © Franklin Azzi)



(Source: Photo © Franklin Azzi)



(Source: Photo © Luc Boegly)



(Source: Photo © Luc Boegly)

[ALSTOM WAREHOUSES, NANTES HIGHER SCHOOL OF FINE ARTS - FRANKLIN AZZI ARCHITECTURE](#)



# FONDS REGIONAL D'ART CONTEMPORAIN

## NORD PAS-DE-CALAIS

### Location

Dunkerque (F)

### Surface

11 130 m<sup>2</sup> (9 160 m<sup>2</sup> new construction + 1 970 m<sup>2</sup> existent hall)

### Client

Communauté Urbaine de Dunkerque

### Concept/Realization

2009/2015

### Architecture

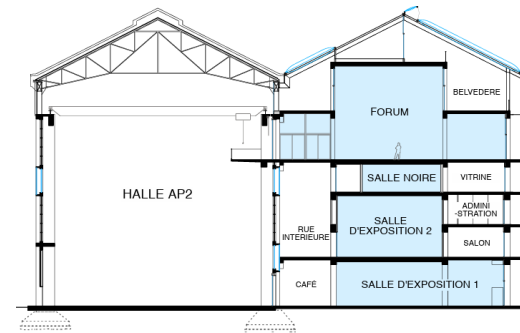
Anne Lacton & Jean Philippe Vassal

### Team

Cesma

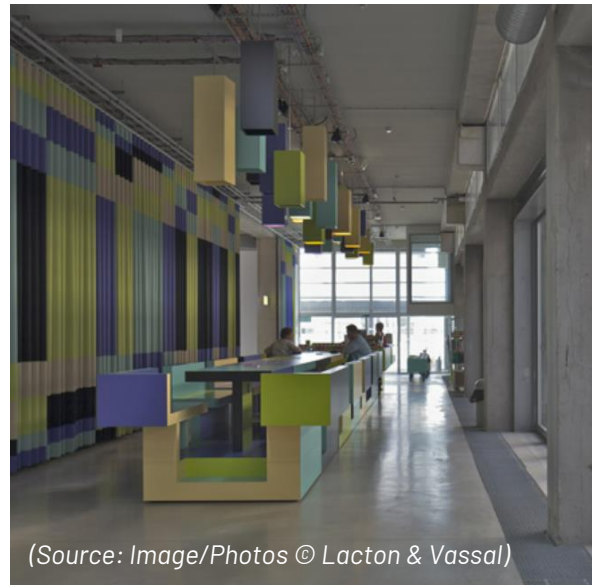
### Cost

12 M (valeur 2011)



**The the Regional Contemporary Art Fund (FRAC) of the Nord Pas-de-Calais Region, settles on the site of the port of Dunkerque, in a former boat hall, called hall AP2.**

Eager to preserve the entirety – and integrity – of this emblematic space, the architects chose to duplicate it: it is its double, attached to the seaside, which houses the FRAC. “The original hall [remains] a fully available space, which can operate either with the FRAC, as an extension of its activities, or independently to host public events



[lacton & vassal \(lactonvassal.com\)](http://lactonvassal.com)

(Source: Image/Photos © Lacton & Vassal)



# LA HALLE

TONY GARNIER

## Location

Lyon (F)

## Surface

17 000 m<sup>2</sup>

## Client

Ville de Lyon

## Realization

1988 (first work)/2000 (second work)

## Architecture

Reichen & Robert/HTVS (first work), Atelier de la Rize (second work)

## Team

ALGOE/INEX, AGIBAT, VDI, CEP

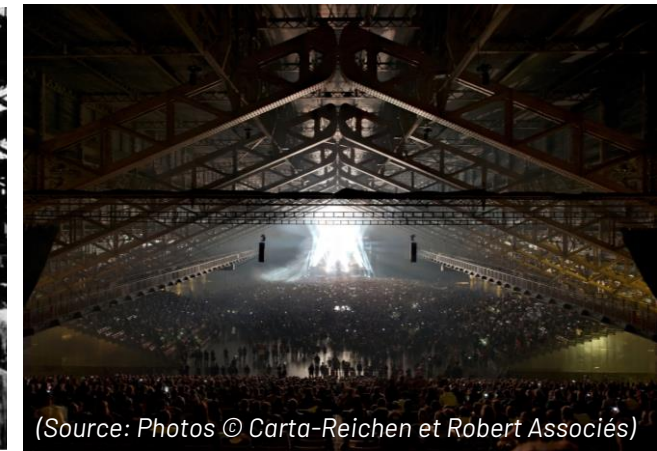
## Cost

18 M (valeur 1988) /18 M (valeur 2000)

**From cattle market to concert hall, the varied history of the Halle Tony Garnier in Lyon is a public institution of the City of Lyon with legal and financial autonomy (EPIC "Public Industrial and Commercial Establishment"). The cultural project is articulated around 3 axes: dissemination/artistic collaboration/living space. It hosts major shows, national and international artists, fairs and events that enliven the city and ensure its influence throughout the year. The hall measures 210m long, 80m wide and 24m high.**

The first work was carried out by the architects Reichen & Robert (repair of the ground floor/creation of basements for technical rooms/technical columns/lighting of the metal arches) and the second (structure/roof 17,500 m<sup>2</sup>) was carried out 12 years later by the architect AIA Atelier de la Rize.

[Histoire de la Halle | Halle Tony Garnier - Lyon \(halle-tony-garnier.com\)](#) / [PSS / Halle Tony Garnier \(Lyon, France\) \(pss-archi.eu\)](#) / [L'histoire alambiquée de la Halle Tony Garnier à Lyon \(rue89lyon.fr\)](#)





# GARE MARITIME

## GOEDERENSTATION

### Location

Brüssel (B)

### Surface

40 000 m<sup>2</sup>

### Client

Ville de Brüssel

### Concept/Realization

2016/18

### Architecture

Bureau Bouwtechniek / Nextensa (renovation of the outer shell)

### Team

Studiebureau Boydens, Studiebureau Ney & Partners, Venac, Bopro, FPC, Arcadis, Seco

### Cost

35 M (valeur 1988 renovation of the outer shell )

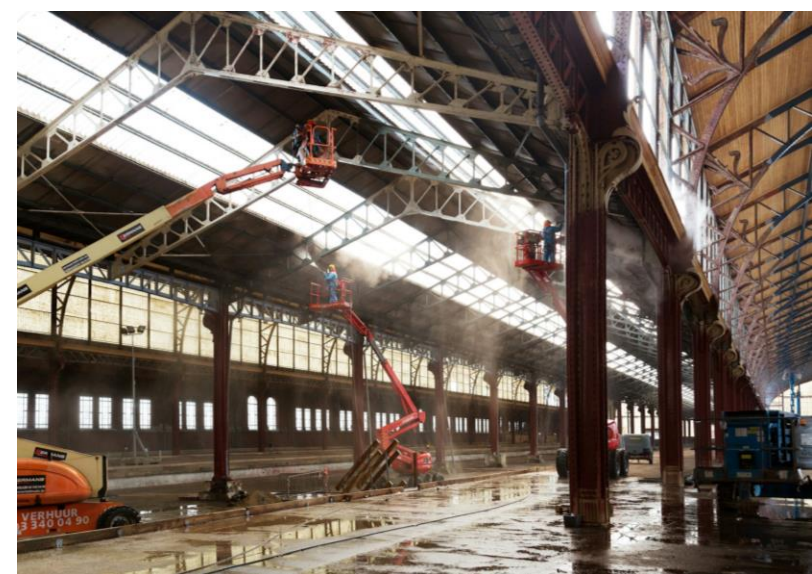
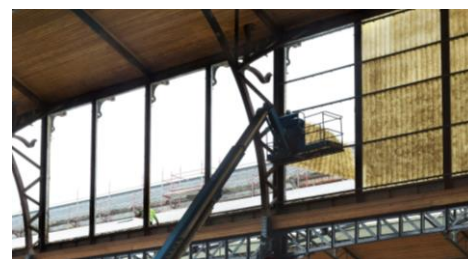
The Gare Maritime is a historic warehouse with a surface area of 40,000 m<sup>2</sup>, a length of 280 m and a width of 140 m. The width is made up of 3 large spans (with a span of 26 m) between which there are smaller spans (with spans between 13 and 18 m). The halls have a metal supporting structure on which a zinc roof rests. The renovation of the old roofs serves to maintain the building and adapt it to the new requirements in terms of functionality, regulations, energy and safety, etc. The façade has been renovated while respecting the existing situation.

After a thorough feasibility study, a complete technical study of the external envelope was initiated and carried out. The much-needed renovation was integrated into the overall appearance of the building. For example, the aluminium and steel curtain walls are matched to the authentic steel structure.

[Goederenstation Gare Maritime | Bureau Bouwtechniek \(b-b.be\)](#)



(Source: Photos © Giulia Frigerio)





# GARE MARITIME

## GOEDERENSTATION

### Location

Brüssel (B)

### Surface

73.000 m<sup>2</sup>

### Client

Extensa

### Concept/Realization

2017 - 2020

### Architecture

Bureau Neutelings Riedijk architecten i.s.m. Bureau Bouwtechniek

### Team

Boydens, Ney & Partners, Venac, FPC, Omgeving, Bopro

### Cost

85 M

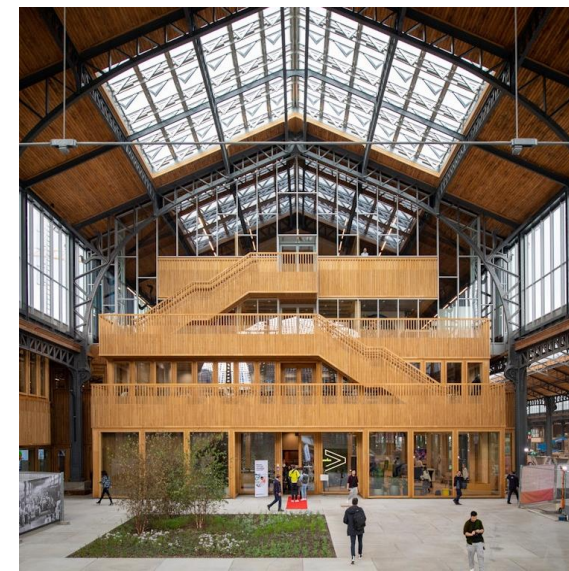
**Part of a larger vision for the Tour & Taxis site, the renovation adapts the non-protected station to modern standards for functionality, energy, and safety, ensuring it meets contemporary needs while preserving its historic character. The story of the building, the renovation and repurposing of what is now a new attraction in Brussels. A fine example of craftsmanship and cooperation. The 39,000 square meters of the station will be given an additional 34,000 square meters by the installation of 12 separate building blocks with a footprint of 1450 square meters and 4 floors. The pavilions fit into the rhythm of the cast-iron trusses and columns. In between, a structure of boulevards, streets, parks and squares is created; like a real city.**

On the ground floor there will be shops, showrooms or catering establishments, and on the upper floors there will be offices. The station consists of 7 interconnected station roofs dating from the beginning of the 20th century: 3 main naves - where trains once ran - with a span of 26 meters and 4 lower platform halls. The whole is made of iron, cast iron and glass. The buttresses have Art Nouveau scrolls; the wooden roof rests on elegant arches.

[Goederenstation Gare Maritime | Bureau Bouwtechniek \(b-b.be\)](https://www.b-b.be/)



(Source: Photos © Giulia Frigerio)





# Werkspoorfabriek

**Location**

Utrecht (Nederland)

**Surface**

9.200 m<sup>2</sup>

**Client**

Overvecht Vastgoed

**Realization**

2016 - 2019

**Architecture**

Zecc Architecten

**Team**

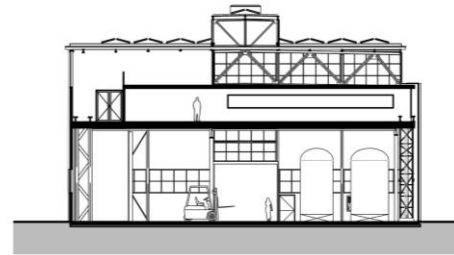
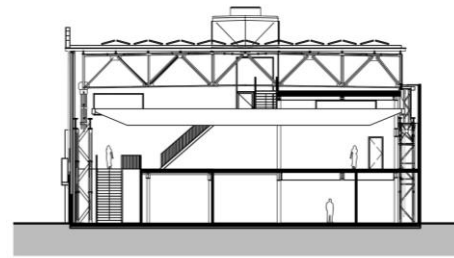
Van Kessel Bouw, Respace, Kijk op Bouwen, Baas B.V, H2O Installatietechniek, Van Roekel & Van Roekel, Wunderhund, Flux Landscape

**Cost**

- M

The Werkspoor District in Utrecht houses an immense industrial warehouse with a length of 175 metres. Together with several other buildings, the factory is part of the old Werkspoor. Large-scale steel constructions were processed here for civil engineering. Most of the buildings have meanwhile been demolished, but together with the Werkspoorkathedraal, the building acts as a catalyst of the area and it is a symbol for circular area development. The Werkspoorfabriek houses a range of businesses from creative independent entrepreneurs to the large beer brewery De Leckere. Together, the businesses form a community in the creative sector and the manufacturing industry. Hospitality is available, as well as event space to stimulate meetings of various businesses that focus on the learning process of manufacturing.

[Werkspoor factory Utrecht | Zecc Architecten](#)



(Source: Image/Photos © Zecc Architecten)

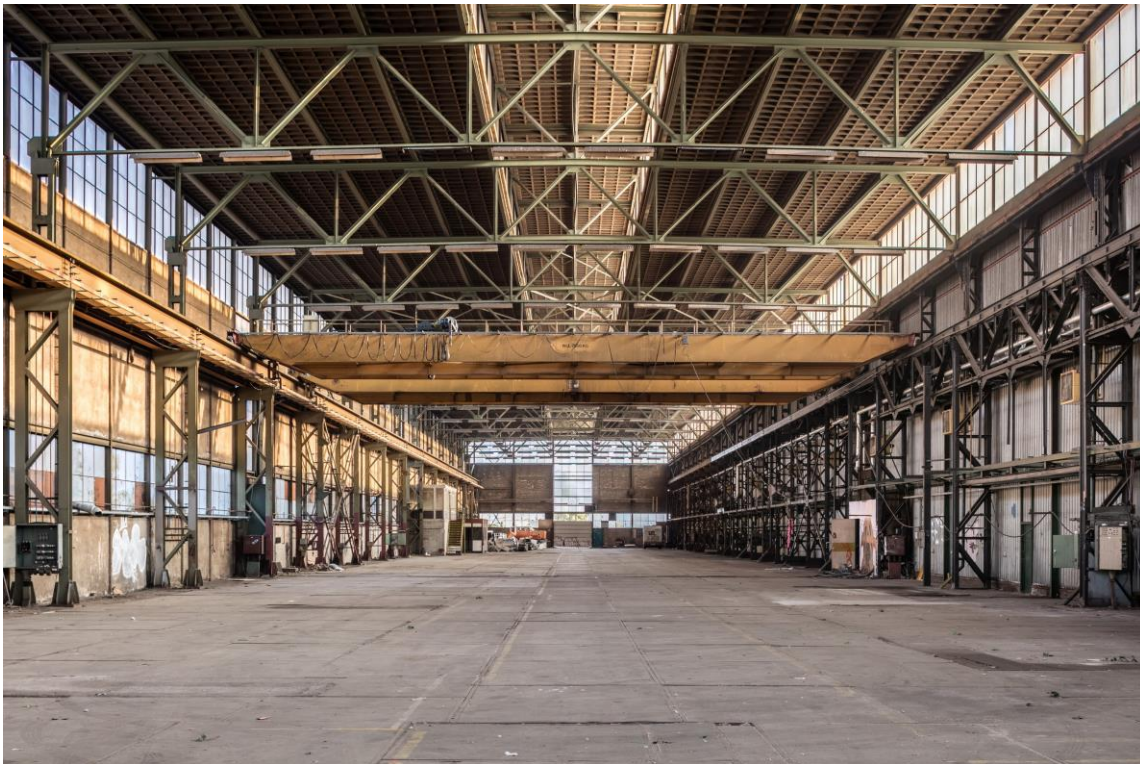
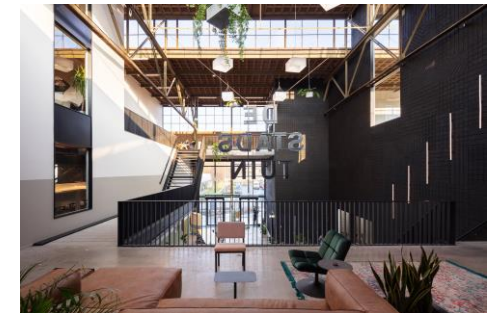
Several new façade openings were created where it was important that the character would not be lost.



# Werkspoorfabriek

The idea was to create a new structure within the 175x25x15m industrial space, allowing diverse businesses to establish themselves while preserving the industrial character, views, and sense of length.

**Program :** CREATIVE COMPANIES, MANUFACTURING INDUSTRY, BEER BREWERY



*The client believe in the power of cooperation and cross-pollination.*



# OMBÚ

## OFFICES AND HEADQUARTERS

### Location

Madrid (S)

### Surface

19.500 m<sup>2</sup>

### Client

Acciona Inmobiliaria

### Concept/Realization

2020/2022

### Architecture

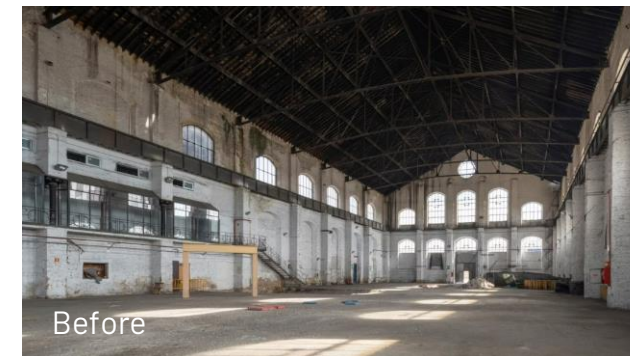
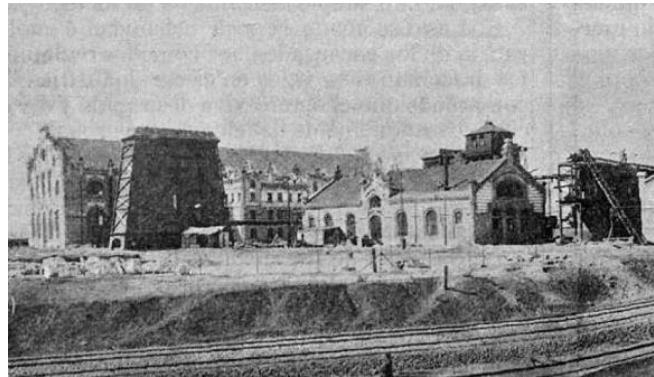
Forster & Partners

### Team

Acciona Construcción/JG ingenieros/Acciona Ingeniería/K8 Paisajismo/Artec3/Ortiz León arquitectos/Enmadera

### Cost

x M



Before



(Source: Photos Ombú/Forster + Partner)

**Ombú is a transformative office building built for the Spanish infrastructure and energy company ACCIONA. This retrofit project breathes new life into a historic industrial building in Madrid, creating a sustainable exemplar of building reuse and revitalising the surrounding area. With over 10,000 square metres of new office space, the project unifies a unique mix of private and public land with green landscaping that extends to the adjoining Méndez Álvaro station.**

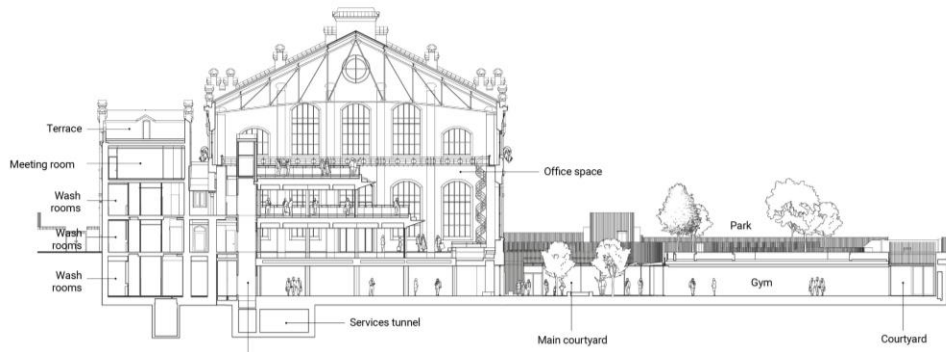
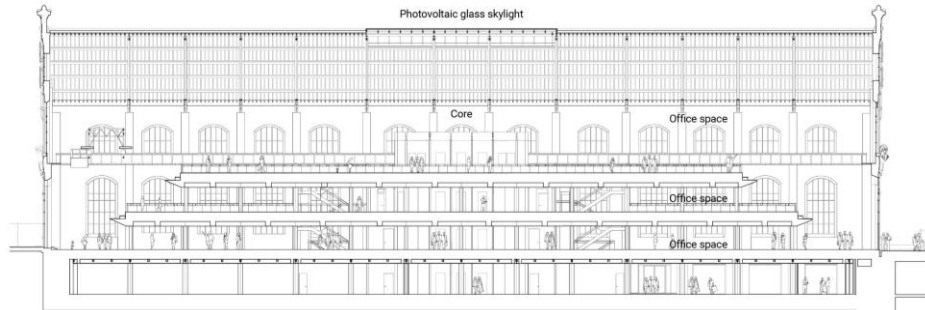
Originally built in 1905 by the architect Luis de Landecho, the building once supplied energy to the surrounding areas. It later fell into disuse until ACCIONA acquired it in 2017, saving it from demolition, a fate that other similar structures in the area had experienced in recent years. The project capitalises on the existing load-bearing structure that supports the pitched steel trusses. The historic building envelope has been retained to conserve over 10,000 tonnes of original brick and mitigate the environmental impact.

[Ombú | Offices and Headquarters \(fosterandpartners.com\)](https://fosterandpartners.com)



# OMBÚ

## OFFICES AND HEADQUARTERS



**The new courtyard in Madrid offers outdoor working spaces, connecting to a 12,400 m<sup>2</sup> park with 350 trees, fostering informal meetings under a green canopy. Local species reduce water consumption, with water sourced locally. This green space strengthens the connection with the community, generating social impact.**

**Timber was used for interiors due to its low carbon footprint and recyclability. A central skylight and solar panels maximize natural light and reduce energy use. Presented at COP26, the project aligns with the Paris Agreement, reducing carbon emissions by 25% compared to new builds and lowering operational energy by 35%.**

[Foster + Partners to transform old gas plant into Acciona Ombú offices \(dezeen.com\)](https://www.dezeen.com)



(Source: Photos Ombú/Forster + Partner)



# DE VASIM

## CULTURAL HOTSPOT ON THE WAAL

### Location

Nijmegen (NL)

### Surface

12.000 m<sup>2</sup>

### Client

Lingotto

### Concept/Realization

2021/2023

### Architecture

Zecc Architecten

### Team

KLOGROEP, ZUS [ZONES URBAINES SENSIBLES], CROES

### Cost

x M

**De Vasim, the first completed building in the NYMA site's redevelopment, will become a creative and cultural hub along the Waal river. Originally an art silk spinning mill from 1928, it became The Vasim in 1948 and was later used as a sintering plant until its closure in 2000.**

Acquired by the municipality, it was transformed into a cultural space with artist workshops and events. A spatial plan for the site, developed by ZUS for Lingotto, KlokGroep, and the Municipality of Nijmegen, guided the renovation. The strategy focused on preserving the building's character, opening facades, and creating adaptable spaces for creative businesses and startups.



**VALUE**  
making the building visible  
and preserve the  
existing character  
stone / concrete



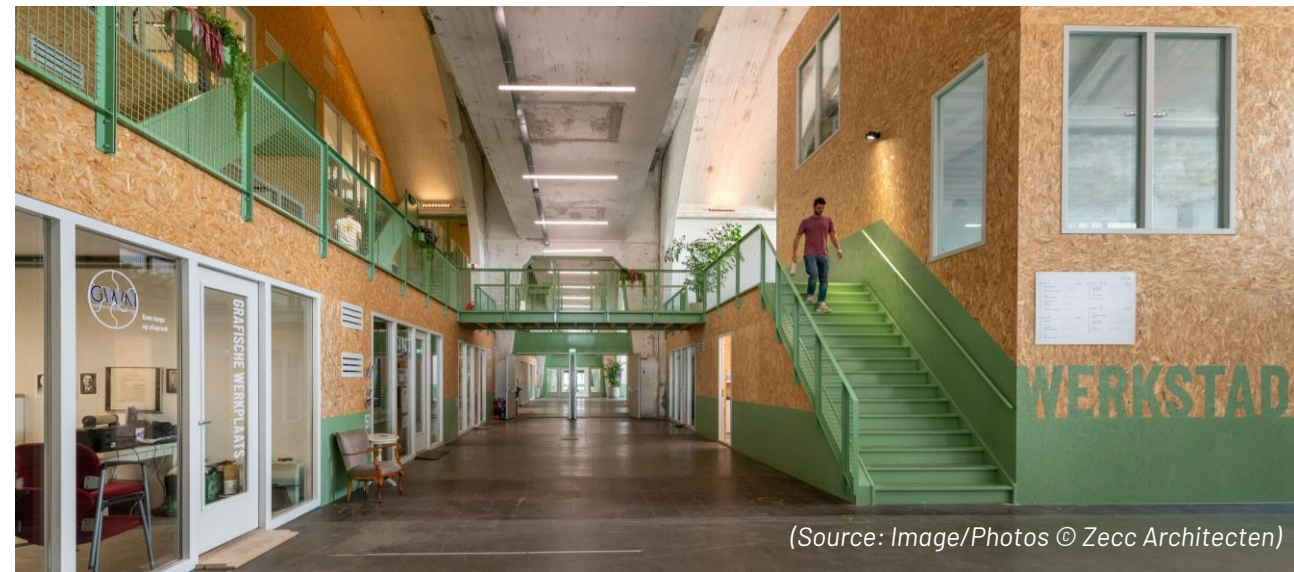
**CONNECTING**  
opening, organizing  
& connect to environment  
NYMA Fabrik  
steel & grid structures



**ACTIVATE**  
allowing new users, leaving room  
for experimentation &  
adjustments in future  
wood and free forms



**PRESERVE**  
as an integral part of  
interventions and organizing  
uses (climate zones)  
circular and modular





# KORNVERSUCHSSPEICHER

BERLIN

## Location

Berlin (G)

## Surface

3.588 m<sup>2</sup> (BGF)

## Client

Adler Group, Berlin

## Concept/Realization

2018/2023

## Architecture

AFF Architekten

## Team

ISKP Ingenieure/Passau Ingenieure/Capattistaubach Urbane Landschaften/  
ISRW – Institut/RP Bauingenieure/Solarlux

## Cost

- M

The listed warehouse, built in the late 19th century on the Berlin-Spandau canal, originally explored grain storage solutions. In 1909/10, an extension (BT2) was added with distinctive funnel storage ceilings and a reinforced concrete frame, marking an early example of concrete construction in Germany. Following a full renovation, it will offer modern office spaces and public areas, with sensitive architectural updates to suit contemporary use.

[AFF - KORNVERSUCHSSPEICHER \(aff-architekten.com\)](https://aff-architekten.com)

[Kornversuchsspeicher in Berlin | Fenster und Türen | Büro/Verwaltung | Baunetz\\_Wissen \(baunetzwissen.de\)](#)



(Source: Photos © Daniel Sumesgutner)



(Source: Photos © TJARK SPILLE)



# FACTORY

## HUB CRIATIVO DE INNOVATION DISTICT

### Location

Beato Lisbon (P)

### Surface

12.400 m<sup>2</sup>

### Client

Factory

### Concept/Realization

2018/2023

### Architecture

Julian Breinersdorfer Architekten

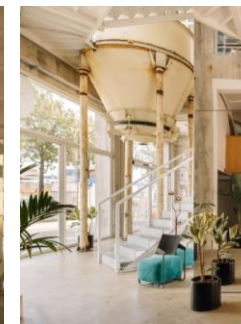
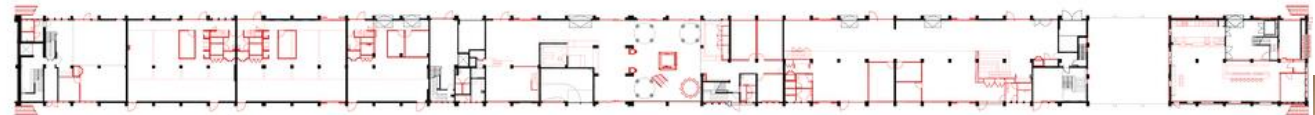
### Team

José Baganha Arquitectos/Angela Maurice Arquitectos/Ricardo Sampaio/  
Duarte Silveira /Engavac/ Pedro Reis/Afaplan

### Cost

- M

**Factory Lisbon repurposes a 1973 military cookie and noodle factory in Lisbon's historic army supply complex, now transforming into the Hub Criativo de Beato innovation district.** The heritage-protected, 200m-long, 11m-wide building features office spaces for large companies and startups, event spaces, local restaurants, and a 2,000m<sup>2</sup> public rooftop terrace. The design preserves original materials, contrasting them with modern concrete, steel, glass, and wood elements. Factory Lisbon aims to engage Beato's community with diverse events in tech, food, gender, sports, fashion, architecture, and art, welcoming both local and international audiences.



[Umbau von Julian Breinersdorfer Architekten in Lissabon / Entrepreneure in der Nudelfabrik - Architektur und Architekten - News / Meldungen / Nachrichten - BauNetz.de](#) [Factory Lisbon - Julian Breinersdorfer Architekten](#) [Factory Lisbon / Julian Breinersdorfer Architekten + José Baganha + Angela Maurice | ArchDaily](#)



# Station F

## STARTUP CAMPUS

### Location

Paris (France)

### Surface

34.034 m<sup>2</sup>

### Client

SDECN (Xavier Niel) / Developer: SEMAPA

### Realization

2018

### Architecture

WILMOTTE & ASSOCIÉS

### Team

2B2M/MOM/MIZRAHI/ARCORA/TRANSSOLAR/BARBANEL/ LASA/D'ICI

LA/COUP D'ECLAT/ARTELIA/CICAD/GLEEDS

### Cost

300 M

**Station F, originally the Halle Freyssinet, is a historic 1927–1929 concrete structure that was refurbished from a former train-truck transhipment building into a startup campus with three parallel naves. Located in Paris Rive Gauche, it connects with the neighborhood through pedestrian streets, shops, and a terraced garden.**

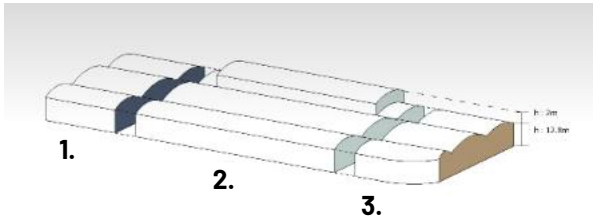
The campus includes a reception, a digital sharing center, an auditorium, and meeting rooms, and hosts over 1,000 startups with 30+ programs. Station F provides extensive resources like an investor network, public services, and 600+ annual events to support entrepreneurs.



(Source: Photos © WILMOTTE & ASSOCIÉS)



# Station F



310 meters long x 58 meters wide

**Station F in Paris is a vast startup campus split into three main zones:**

**1.Share:** A collaborative forum with a Fab Lab (equipped with 3D printers), a 370-seat auditorium, and meeting rooms.

**2.Create:** The central workspace for startups, featuring an open central nave for community use and 24 “villages” along the sides. Each village offers shared workspaces, kitchens, meeting rooms, and Skype boxes.

**3.Chill:** A 24-hour restaurant, La Felicità, with a terrace and garden, open to the public and designed for relaxation and networking.

**Each zone is tailored to support different needs, from prototyping to socializing.**

JEAN-MICHEL WILMOTTE, ARCHITECT:

**“The intelligence of the project lies in its programme, which fits into the building without disfiguring its structure. The interest of our intervention, by leaving the concrete vaults and the perspective on the length of the building visible, is to have preserved this industrial heritage.”**



(Source: Photos © Patrick Tourneboeuf)



# Station F

## STARTUP CAMPUS



**“With STATION F, we wish to give a framework to the fragmented startup ecosystem in France and in Europe. I also want to provide entrepreneurs the means to achieve high ambitions.” XAVIER NIEL, Founder**

With 3,000 workstations and a building capacity of 9,000, Station F will run over 20 international programmes and will welcome tenants from around the world. The programme includes the creation of a reception, meeting and digital sharing centre, an auditorium and meeting rooms.



**Empowering the next generation of entrepreneurs**



(Source: Photos © Patrick Tourneboeuf)

[Station F: the world's largest startup campus opens in Paris](#)



# Power Station Power Station of Art

## SHANGHAI CONTEMPORARY ART MUSEUM (PSA)

### Location

Shanghai (China)

### Surface

41.000 m<sup>2</sup>

### Client

The museum is a public institution funded by the Shanghai City Culture and Tourism Bureau

### Realization

2012

### Architecture

TJAS Original Design Studio

### Team

-

### Cost

64 M

Established on October 1, 2012, the Power Station of Art (PSA) is China's first state-run museum dedicated to contemporary art and hosts the Shanghai Biennale. Located by the Huangpu River, it occupies 41,000 square meters, with 15,000 square meters of exhibition space and a 165-meter chimney that is part of Shanghai's skyline. Originally the Nanshi Power Plant and later the Pavilion of Future during the 2010 World Expo, PSA blends industrial and modern design, fostering innovation and serving as a hub for contemporary art and cultural exchange in Shanghai.

[TJAD Original Design Studio](#)

[Power Station of Art](#)



Nanshi Power Plant (1955-2007)



Pavilion of Future of 2010 Shanghai World Expo



(Source: Photos © Power Station of Art)



**Merci pour votre attention!**